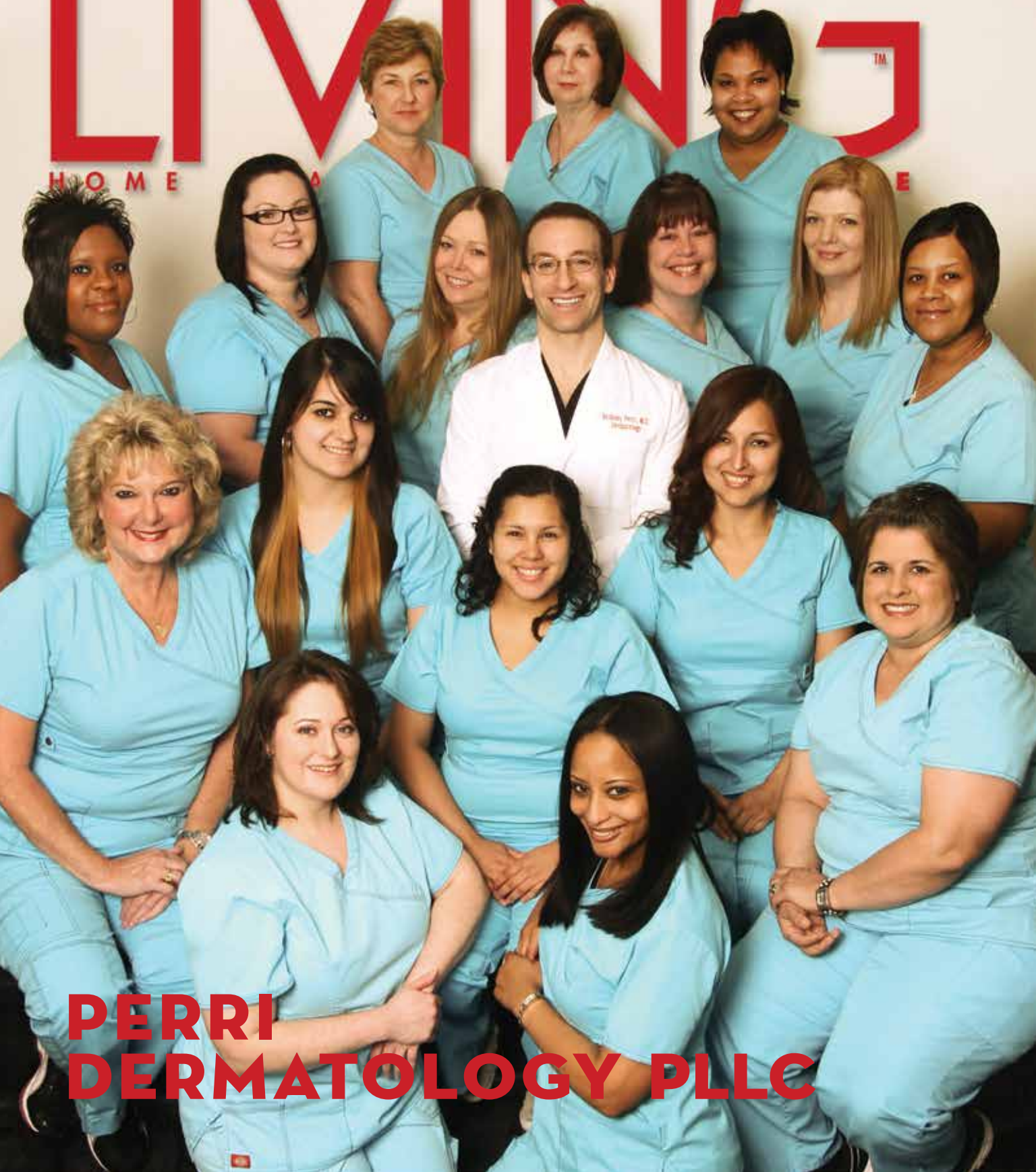


# LIVING

H O M E



**PERRI  
DERMATOLOGY PLLC**

# Perri Dermatology PLLC



PHOTOGRAPHY BY SOMER LYNNE

Over the past few months, healthcare delivery in Montgomery County has undergone some significant changes with the abrupt cessation of patient care by Sadler Clinic on May 31st. Dr. Anthony Perri, a board certified dermatologist, had practiced for the past four years at Sadler Clinic and it has always been his mission since arriving in Montgomery County in 2008 to ensure immediate access for patients seeking dermatologic care. Prior to his arrival, it was not unusual to wait months to almost a year for an appointment with a board certified dermatologist. Thus, with the sudden announcement of Sadler Clinic's closure, in order to continue his mission of prompt dermatologic care and open access, he established Perri Dermatology, PLLC which opened its doors to patients immediately on June 1st. "I am very proud of my outstanding team of professionals at Perri Dermatology, PLLC in that we were able to begin our new practice seamlessly and continue to care for our patients with no interruption in continuity of treatment."

"The transition from Sadler Clinic to Perri Dermatology, PLLC could not have gone smoother as we still have the same caring medical and clerical staff that my patients have become very comfortable with and learned to trust, as well as some excellent new staff members. In addition to our phone numbers being the



same, we are located at our original location in Conroe on League Line Rd. on Mondays, Thursdays, and Fridays. In the Woodlands, we are currently practicing at 9201 Pinecroft Dr. on Tuesdays and Wednesdays as we await the remodeling of our brand new office in the 9305 Pinecroft Dr. building with a grand opening set for October 2012."

Texas Raised and Texas Trained, Dr. Perri learned the damaging effects of UV radiation on the skin growing up in nearby Corsicana, Texas, as his own father was diagnosed by a dermatologist with a melanoma. Fortunately, the melanoma was treated in a very early stage and his father is alive and well today due to the early detection of this skin cancer. Dr. Perri encountered many patients with skin





cancer caused by the powerful Texas sun in his medical training at Baylor College of Medicine and The University of Texas Medical Branch where he served as Chief Resident of Dermatology prior to coming to in Montgomery County. Dr. Perri established, as one of his primary missions, the early detection of skin cancer and Open Access continues to be a hallmark of his practice at Perri Dermatology, PLLC with extended hours from 8:00 a.m. to 6:00 p.m. during the week. "Immediate access to a board certified dermatologist is essential to having the best possible outcome for a skin cancer or a fast progressing rash."

Additionally, appointments can be made expeditiously through Dr. Perri's website PerriDermatology.com using the "Zoc Doc" system in which patients can choose any location and time they desire without even calling the office. "With our extended office hours, patients are able to make an appointment in spite of their busy schedules. Our electronic medical record is another example of how we employ the latest technology for our patient's benefit. I am very fortunate to have a very large team of caring healthcare professionals whose primary focus is on providing excellent patient care to facilitate a very pleasant and smooth experience with our office."

Dr. Perri has been practicing in Montgomery County as a board certified dermatologist for over four years and in that time has rapidly become regarded as one of Houston's leading dermatologists. Formerly the Chief of Dermatology at Sadler Clinic, he was recognized by H Magazine in 2011 and 2012 as one of the Top Doctors in Houston. Recently, he was selected as a Rising Star

by Texas Monthly in their Super Doctors edition. Educating the public is another one of Dr. Perri's missions and he is a contributor on the television show Top Docs of Houston which airs every weekend on the CW network channel 39. <sup>LM</sup>



## Perri Dermatology PLLC

PerriDermatology.com

### The Woodlands

9201 Pinecroft Drive  
The Woodlands, Texas 77380  
281-943-2749

### Conroe

4015 I-45 North  
Conroe, Texas 77304  
936-522-4966